

INSTALLATION PROCEDURE FOR P.T. CRUISER- 200-C
PART NO. 8100

NOTE: It is necessary to remove the rear tires for the drilling and fastening of the steps to rear fender locations. It is also recommended using two persons for placement and securing of the step to the vehicle rocker.

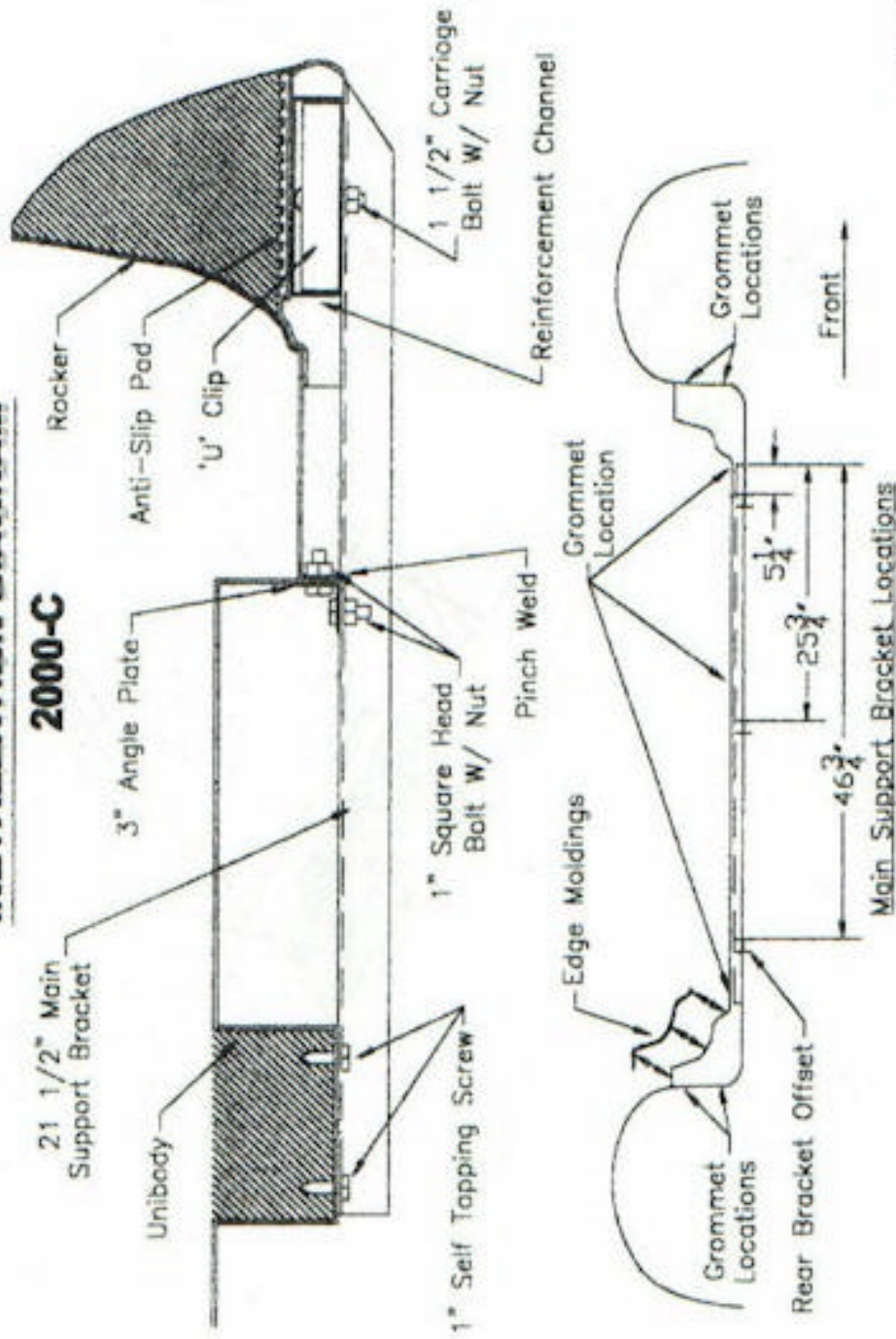
1. Remove brackets from the packaging. **NOTE: brackets should be labeled as PAC 8100.**
2. Assemble 3" angle plates to the brackets leaving finger tight. Insert all 1" bolts into slotted C-channel reinforcement plate on the bottom of the step.
3. Position the step under the vehicle rocker and drill out the three (3) supplied hole locations. Insert the supplied grommets and secure to the rocker.
4. Attach the main brackets supports to C- channel fastening plate only finger tightens at this time. **NOTE: rear bracket has a bend. Front and center are straight.**
5. Drill and install the brackets to unibody using two (2) 1" self tapping screws.
6. Drill and attach 3" angle plate to pinch weld using either 5/16" bolts supplied or self tapping screws.
7. Position step flares against the factory wheel well opening and drill out the two (2) supplied hole locations front and rear.
8. Check and tighten all bolts and nuts to securely fasten board to vehicle.
9. Wipe the step area with a clean towel and install anti-slip pad.

PT CRUISER ABS Plastic

Part # 8100

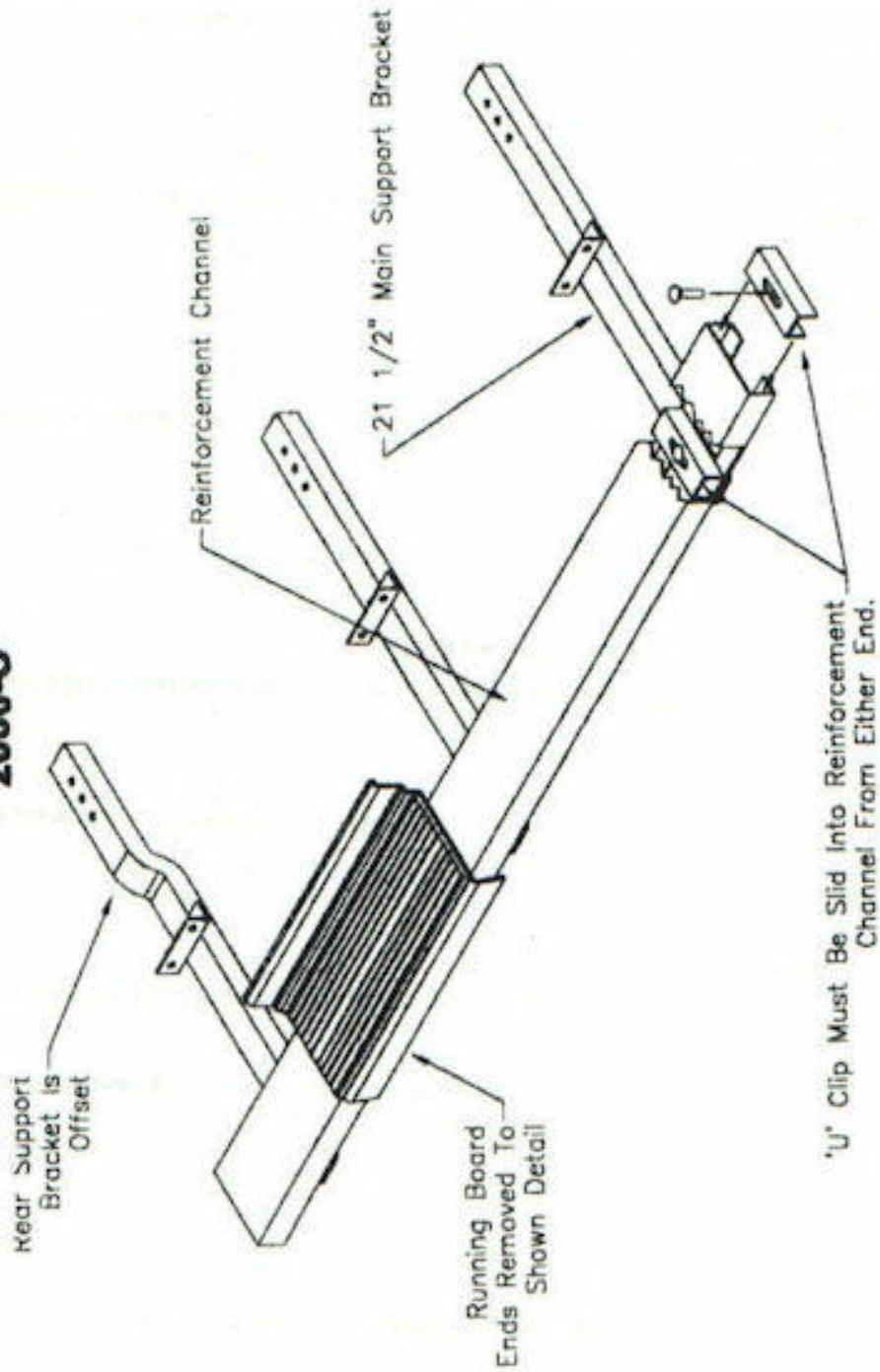
INSTALLATION DIAGRAM

2000-C



2/21/01

PT Cruiser
Part # 8100
Assembly View
2000-C



2/8/01